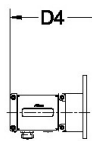


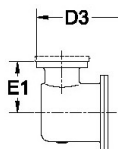


**ROMET**

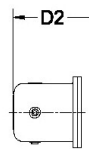
# Rotary Gas Meters



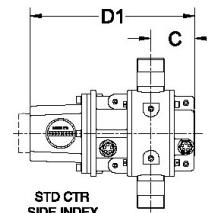
AdEM



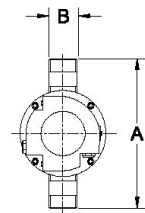
STDID / DCID



STD CTR  
END INDEX



STD CTR  
SIDE INDEX



Note: AMI/AMR adaptors available upon request.

METER SIZE	A	B	C	D1	D1 (no Mag. Hsg)	D2	D3	D4	E1	WEIGHT (lbs)
RM600	10.50"	1.5" NPT	3.08"	10.55"	8.09"	12.03"	12.86"	13.75"	4.00"	12-15

**RM600 - IMPERIAL**

# IMPERIAL RM600 1.5" NPT CONNECTION

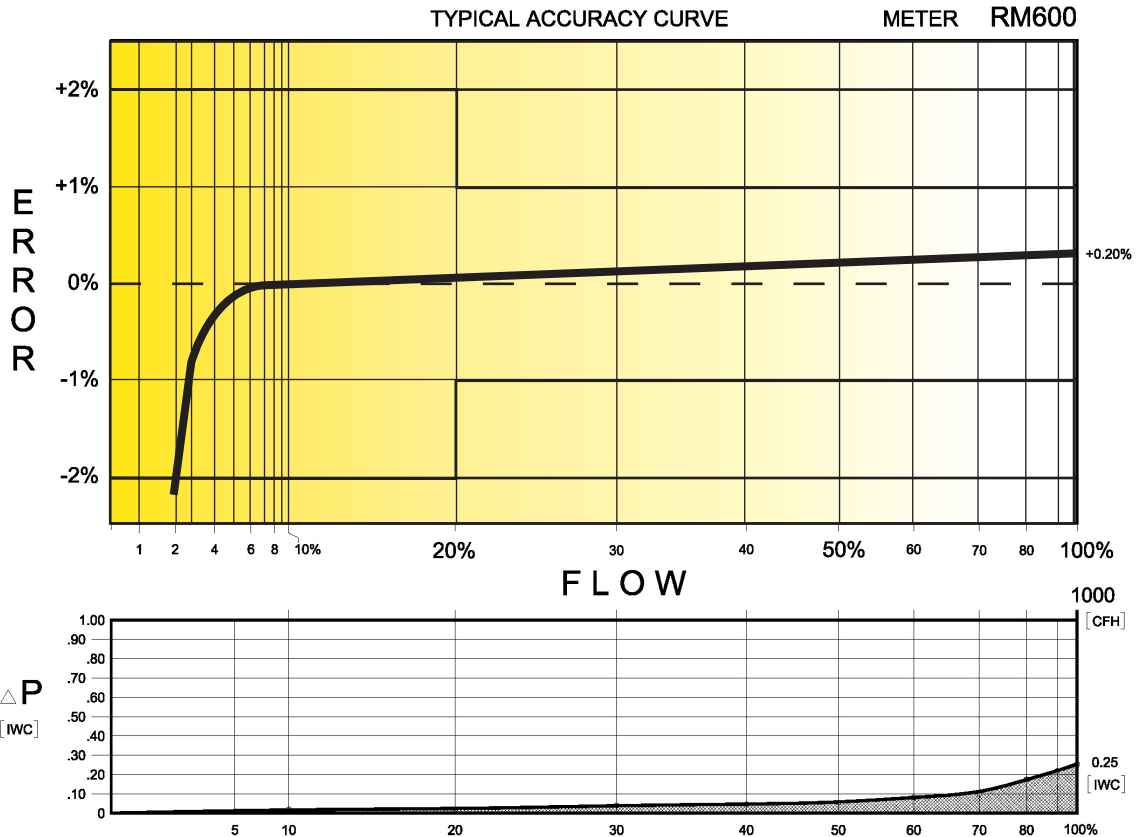
## TECHNICAL SPECIFICATION

Connection (Threaded)	NPT	1.5"
MAOP	(psig)	175/200
Flow Capacity	(cfh)	600
Rangeability* (up to 1:160 @ atmospheric condition)		1:160
Start Rate	(cfh)	1.8
Stop Rate	(cfh)	1.5
Differential @ 100% Flow	(I.W.C.)	0.25
Instrument Drive Rate	(cf/rev)	10
LF Pulser (Optional)	(cf/pulse)	10

\*Note: It should be noted, that moving parts in the meters with greater rangeability ratio are made to high class accuracy and tight tolerances. Improper installation, stresses on piping system due to temperature changes, settling and gas conditions can create a risk of meter rejection.

### CORRECTED FLOW CAPACITY AND TYPICAL ACCURACY GUIDE

RM600 METER (SCFH)	
Gauge Pressure P.S.I.G. 0.25	RM600 Qmax = 600ft <sup>3</sup> /hr
2	627
5	790
10	994
15	1197
20	1401
25	1605
50	2623
75	3641
100	4660
125	5678
150	6697
175	7715



# ROMET

**GAS METERS AND ELECTRONIC INSTRUMENTS**  
 Phone 905-624-1591 USA 1-800-387-3201  
 www.rometlimited.com • email: romet@rometlimited.com

The values quoted are typical of normal production. They do not constitute a specification. Rommet Limited reserves the right to change any information in this literature without notice. All of the information and data in this literature has been carefully compiled and thoroughly checked. However, Rommet Limited will not assume responsibility for any possible omissions or errors.  
 ROMET and ROMET & DESIGN are registered trademarks of Rommet Limited. Rommet Limited's gas metering technology is protected under U.S. Patent No. 4,910,519 and 6,453,721 and Canadian Patent No. 1,293,568.